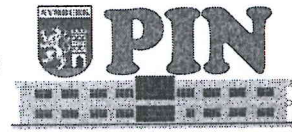


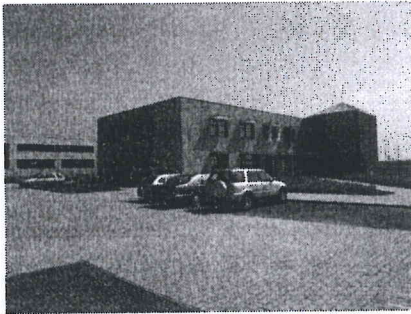
Company identification data:

Company name: **Business incubator Nymburk - funded organization**
Address: **Za Žoskou 2506, 288 02 Nymburk**
District: **Nymburk**
Website: **www.inkubator-nymburk.eu**



Company profile:

The Business Incubator Nymburk project was carried out under the PROSPERITY programme of the Operational Programme Industry and Enterprise. It was financed mainly by a grant from the European Regional Development Fund and the Ministry of Industry and Trade. The other providers of grants were the Central Bohemia Region, Nymburk Town and its subsequent Business Incubator (PIN) through a bank investment loan. The PIN is located in the Nymburk - north industrial zone, close to the plant of MAGNA multinational and the Chinese company CHANGHONG.



The incubator campus consists of a two-storey office building with a floor area of more than 1,300 square meters and an almost 2,000 m² production hall. According to the definition of a business incubator we have created an appropriate environment for start-ups and especially innovative businesses that, by using pre-determined preferential terms, can realize their business plans. Construction of the complex started in 04/2007 and was completed in 01/2008, approved in 02/2008 and the first lessees in the new areas were already settled in 03/2008.

The availability of incubator space is continuously growing and in recent years it has been almost fully occupied. The consequence of this is that since 2010 PIN has been economically self-sufficient, without any contribution from the founder.

As stated in their mission plan, PIN seeks to host high technology firms as the basis of development activities primarily in the automotive industry, microelectronics and robotics. A typical example is to build a development laboratory and test TÜV SÜD air bags, equipped with the latest technologies meeting the latest market requirements, allowing, for instance, new tests with regulation of humidity (simulation aging parts) and shooting airbags directly in the climatic chamber. The exceptional properties are determined by climatic chambers operating at temperatures from minus 70 to plus 150 degrees Celsius, modelling moisture from 15 to 95% and more extreme properties.

Recently, innovative printing firms carrying out major projects within the development programme with EU support have joined our site. The outputs are mainly export products.

With the help of the Central Bohemia Region, PIN is currently creating a co-working centre equipped with the necessary technology. This is a shared workspace for people interested in business, independent professionals and other distance workers independently carrying out their activities. The co-working pillars are: community, cooperation, openness and accessibility. An interesting service which has just been introduced is a virtual address of a virtual office especially for small businesses that want to move their headquarters from their residential address and are not interested in setting up an office.